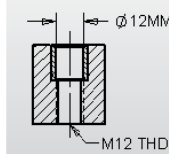




5-Axis Risers, Mini & Barbell Style – Steel or Aluminum

Fixture-Pro® 5-Axis Risers raise, position and locate the part off the machine or rotary table so the part is accessible for machining all 5 sides. Mounts direct to QLS grid or tables with Fixture-Pro® Locating Keys and LHCS. Mounts to Fixture-Pro® subplate with center bore, timing pin and LHCS or QLS shoulder screws.

- Material: 1018 Steel or Aluminum
- Thickness Tolerance ± 0.002 (.05mm)
- Flat & Parallel within: .0005" (.013mm)
- Finish: Black Oxide or Anodize

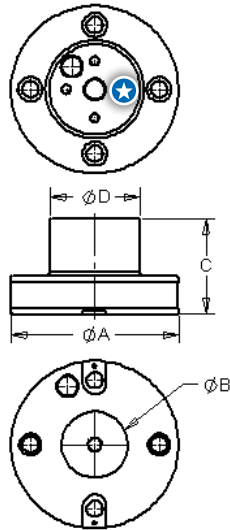


= Jergens QLS

Quick Locating System (QLS) Bushings are hardened and ground for accurate and repeatable setups. Use in combination with 12mm QLS dowel pins or shoulder screws.



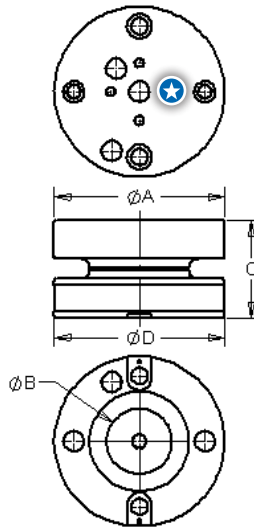
Mini Riser



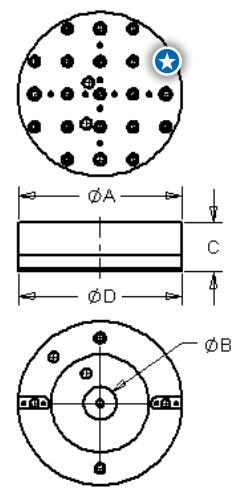
Mini Risers – Designed for use with small pallet machine tools and the 75mm platform top tooling.



130mm Barbell



250mm Barbell



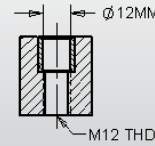
| Part Number | | Style | A (mm) | B (mm) | C (mm) | D (mm) | Bottom Center Bore | Mounting Type | Grid | Weight lbs (Kgs) | |
|-------------|-----------|--------------|--------|--------|--------|--------|--------------------|----------------|-------------|------------------|--------------|
| Steel | Aluminum | | | | | | | | | Steel | Aluminum |
| 5RS130001 | 5RS130004 | Mini | 130 | 50 | 75 | 70.3 | 50H7 | QLS, 12mm LHCS | 50mm x 50mm | 8.21 (3.72) | 2.84 (1.29) |
| 5RS130002 | 5RS130005 | Barbell Low | 130 | 50 | 75 | 130 | 50H7 | QLS, 12mm LHCS | 50mm x 50mm | 12.82 (5.82) | 4.44 (2.01) |
| 5RS130003 | 5RS130006 | Barbell Tall | 130 | 50 | 125 | 130 | 50H7 | QLS, 12mm LHCS | 50mm x 50mm | 16.8 (7.62) | 5.82 (2.64) |
| 5RS250001 | 5RS250005 | Barbell Low | 250 | 50 | 75 | 250 | 50H7 | QLS, 12mm LHCS | 50mm x 50mm | 88.6 (40.2) | 20.5(9.3) |
| 5RS250002 | 5RS250006 | Barbell Tall | 250 | 50 | 125 | 250 | 50H7 | QLS, 12mm LHCS | 50mm x 50mm | 93.3 (42.3) | 25.34 (11.5) |

QUICK CHANGE FIXTURING » FIXTURE PRO® MULTI-AXIS QUICK CHANGE FIXTURING

5-Axis Risers, Flanged, Rectangle or Square Style – Steel or Aluminum

Fixture-Pro® 5-Axis Risers raise, position and locate the part off the machine or rotary table so the part is accessible for machining all 5 sides. Mounts direct to QLS grid or tables with Fixture-Pro® Locating Keys and LHCS. Mounts to Fixture-Pro® subplate with center bore, timing pin and LHCS or QLS shoulder screws.

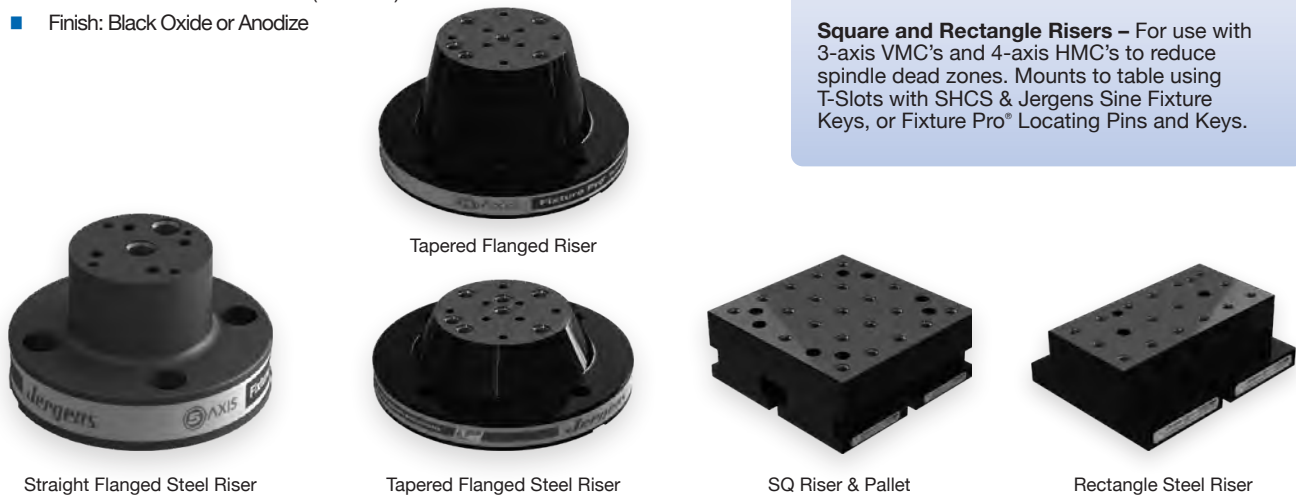
- Material: 1018 Steel or Aluminum
- Thickness Tolerance ± 0.002 (.05mm)
- Flat & Parallel within: .0005 (.013mm)
- Finish: Black Oxide or Anodize



 = Jergens QLS

Quick Locating System (QLS) Bushings are hardened and ground for accurate and repeatable setups. Use in combination with 12mm QLS dowel pins or shoulder screws.

Square and Rectangle Risers – For use with 3-axis VMC's and 4-axis HMC's to reduce spindle dead zones. Mounts to table using T-Slots with SHCS & Jergens Sine Fixture Keys, or Fixture Pro® Locating Pins and Keys.



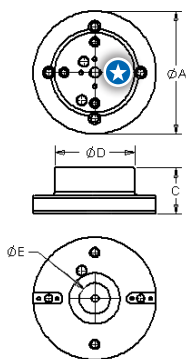
Straight Flanged Steel Riser

Tapered Flanged Riser

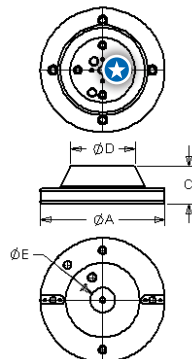
Tapered Flanged Steel Riser

SQ Riser & Pallet

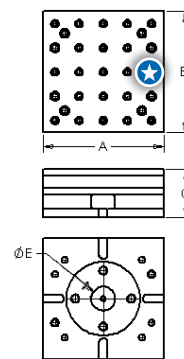
Rectangle Steel Riser



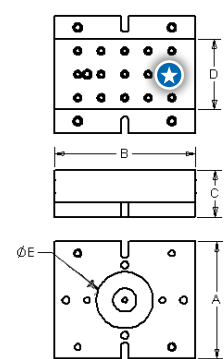
Straight Flanged Riser



Tapered Flanged Riser



Square Riser



Rectangle Riser

| Part Number | | Style | A (mm) | B (mm) | C (mm) | D (mm) | E Bottom Center Bore | Mounting Type | Grid | Weight lbs (Kgs) | |
|-------------|------------|------------------|--------|--------|--------|--------|----------------------|----------------|-------------|------------------|--------------|
| Steel | Aluminum | | | | | | | | | Steel | Aluminum |
| 5RS250003 | 5RS250007 | Tapered Flanged | 250 | — | 75 | 130 | 50H7 | QLS, 12mm SHCS | 50mm x 50mm | 36.8 (16.7) | 12.75 (5.78) |
| 5RS250004 | 5RS250008 | Tapered Flanged | 250 | — | 125 | 130 | 50H7 | QLS, 12mm SHCS | 50mm x 50mm | 53.2 (24.1) | 18.42 (8.36) |
| 5RS150001 | 5RS150002 | Rectangle | 250 | 300 | 100 | 150 | 50H7 | QLS, 12mm SHCS | 50mm x 50mm | 87.0 (39.5) | 30.67 (13.9) |
| 5RS250009 | 5RS250010 | Square | 250 | 250 | 100 | 250 | 50H7 | QLS, 12mm SHCS | 50mm x 50mm | 77.3 (35.1) | 28.0 (12.7) |
| 5RS200007* | 5RS200010* | Straight Flanged | 200 | — | 75 | 130 | 50H7 | QLS, 12mm SHCS | 12mm x 50mm | 24.0 (10.9) | 8.4 (3.8) |
| 5RS200008* | 5RS200011* | Straight Flanged | 200 | — | 125 | 130 | 50H7 | QLS, 12mm SHCS | 12mm x 50mm | 36.0 (16.4) | 12.4 (5.6) |

* 200mm risers are designed to work with rotary tables. If intended for use on Fixture-Pro® subplates, 4 extra mounting holes are needed. Call 877-426-2504 for assistance.